

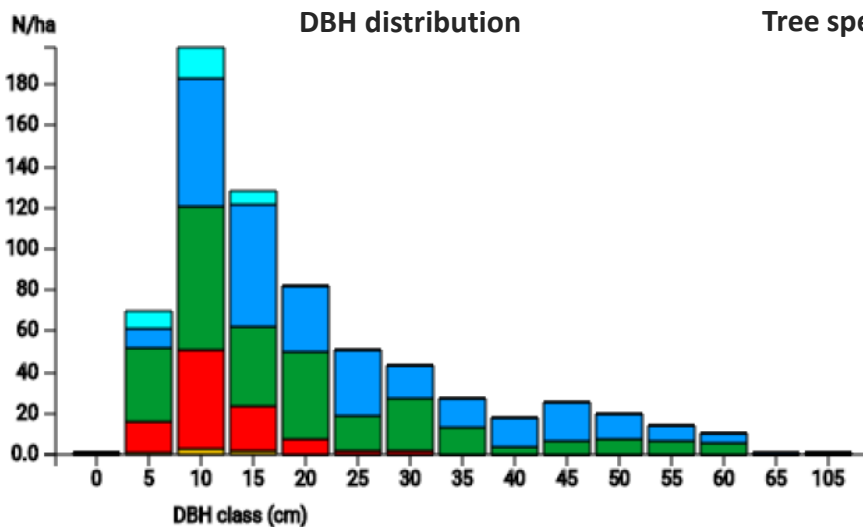
# Technical information

ES

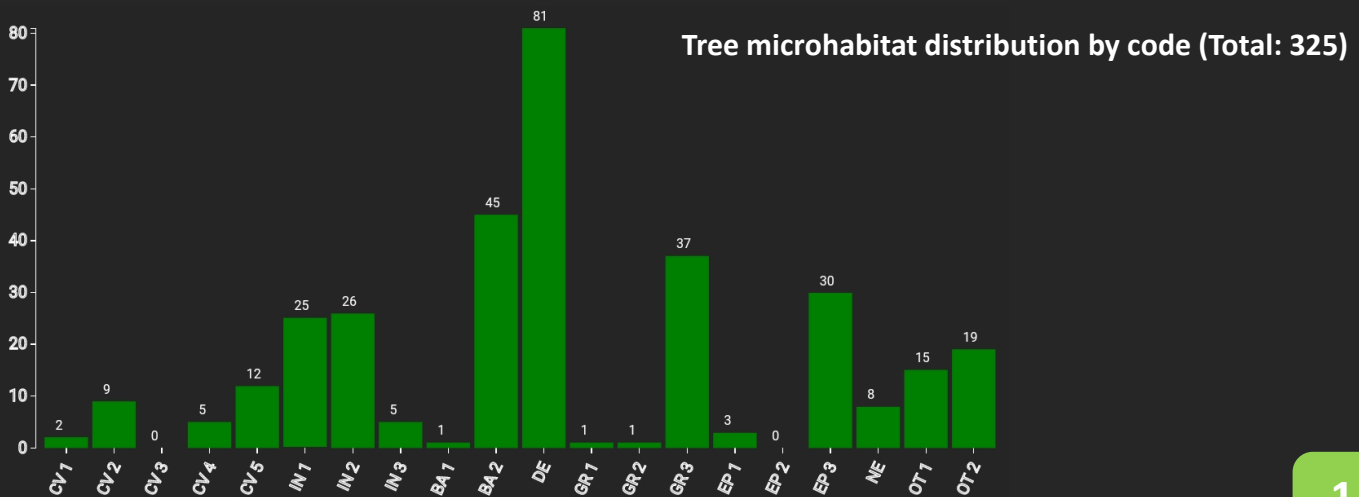
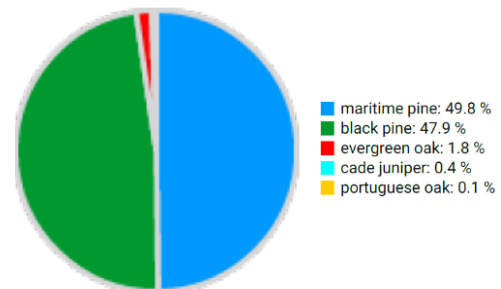
Name: **Cazorla**

Forest type: **Maritime and black pine**

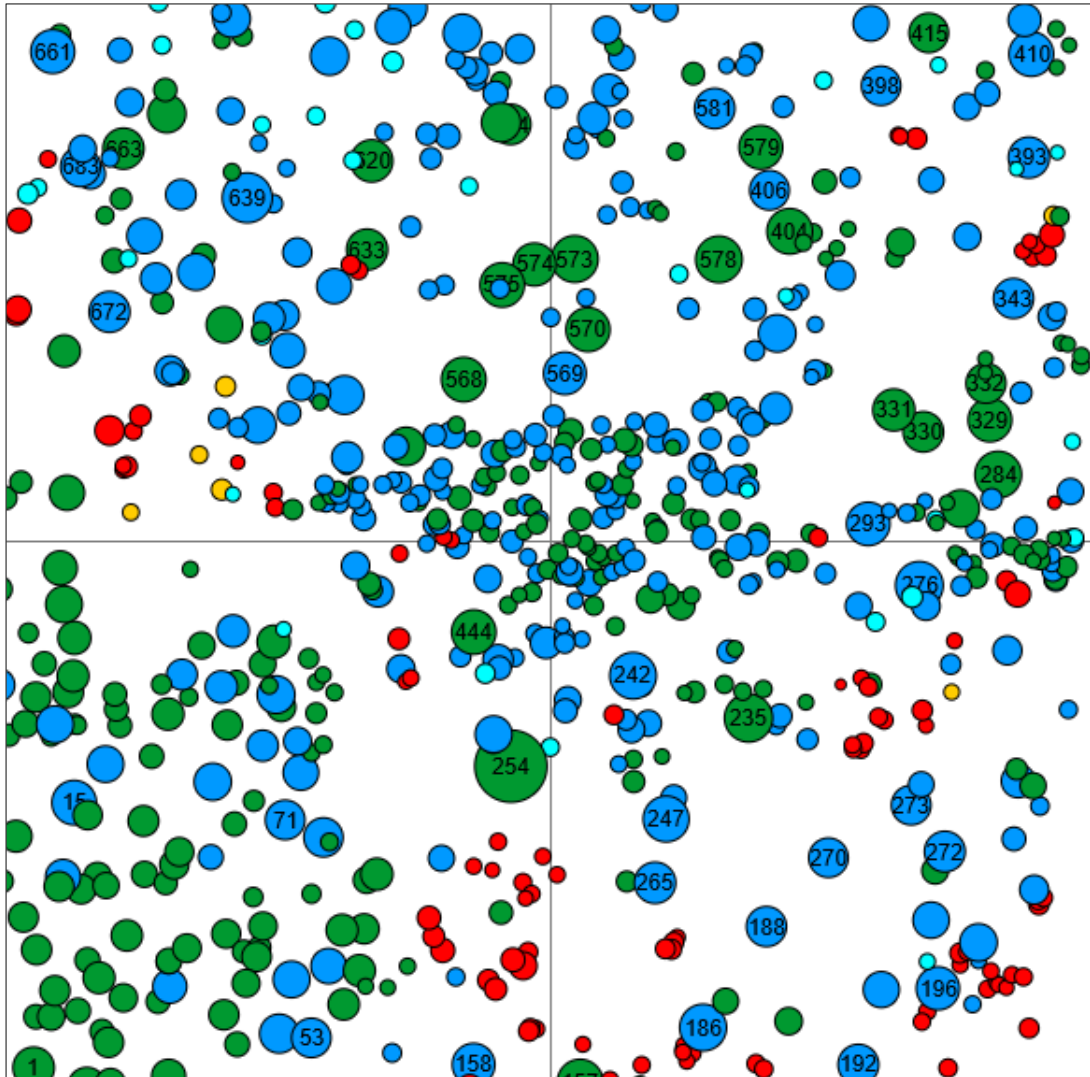
State / Region	Owner	Establishment	Size
Andalusia	Public (Autonomous Region of Andalusia)	2016	1 ha
Altitude [m.a.s.l.]	Mean annual precipitation [mm]	Mean annual temperature [°C]	Natural forest community
1285	1031	13.3	Junipero sabinae-Pinetum mauretanae
Number of trees [N/ha]	Basal area [m <sup>2</sup> /ha]	Volume [m <sup>3</sup> /ha]	Habitat value [points/ha]
689	37.6	263.9	4014



Tree species distribution (% Volume)



## Marteloscope map (1.0 ha):



### Contact:

**Begoña Abellanas Oar**

Dpto. Ingeniería Forestal; E.T.S. I. Agronómica  
y de Montes; Universidad de Córdoba  
Edificio Leonardo da Vinci. Campus de  
Rabanales. Ctra. NIVa, km 397. E-14017  
Córdoba  
[ir1aboab@uco.es](mailto:ir1aboab@uco.es)

